



ASEAN IVO Forum 2018

# **Mobile Smart Trip Routing for Ancient Heritage Region of Bagan**

**Myat Thiri Khine and Myint Myint Sein  
University of Computer Studies, Yangon  
Myanmar**

# Introduction

- Trip information is important for all travellers to plan the travel itinerary.
- Although the internet make it look easy to go from one place to another, reality is different.
- In travelling, tourists sometimes face losing the travel destination, missing the route and places in an unfamiliar region.
- Tourists are also difficult to plan the travel itinerary of visiting places.

# Ancient Bagan City

- Ancient City
- several historic pagodas and temples



**Glazed Decoratives**



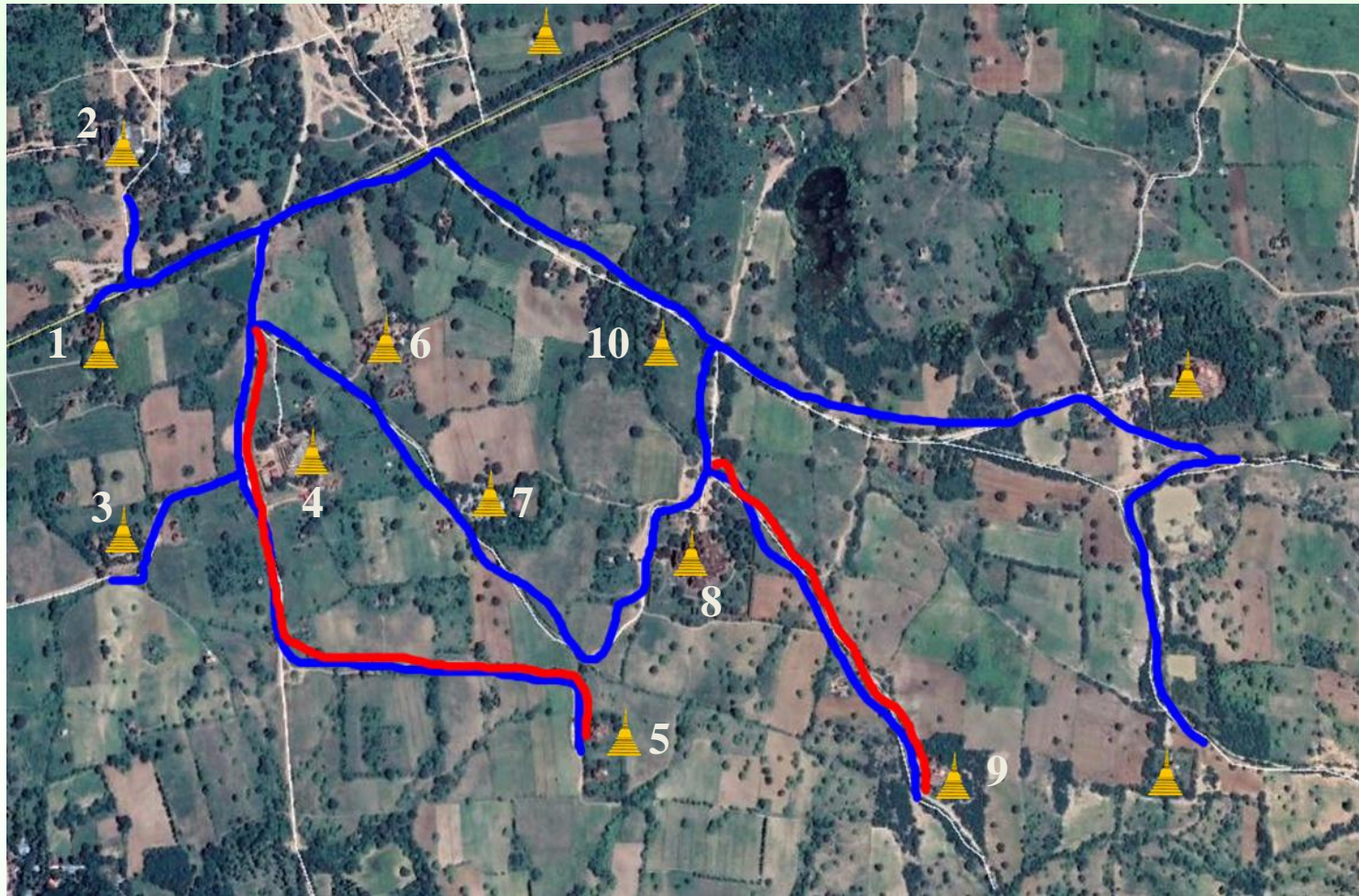
**Mural Painting**



# Travel Problem in Bagan

- There are several tourists travel with travel agency but some are more interested in self-travelling.
- Most of the tourists visit Ancient Bagan City by hiring the e-bike and bicycle.
- It is difficult to visit all historic pagodas and temples within the limited time because of numerous historic monuments and unfamiliar route.

# Overlapping Route



— Route

— Overlap Route

# Objectives

- To obtain the location itinerary of travel places
- To avoid overlapping route
- To visit the places within the limited time
- To be easier and faster travel from one point to another

# Trip Planning Feature



selection of point of interest



trip time.



path routing

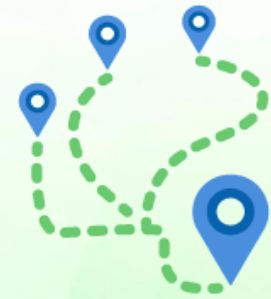
# Trip Time

- It cannot visit all the attractions places of Ancient Bagan City in just a few days .
- It is important to obtain the efficient and effective itinerary in order to visit within the limited time.
- This system will consider the travel itinerary depend on the tourists' travel time.



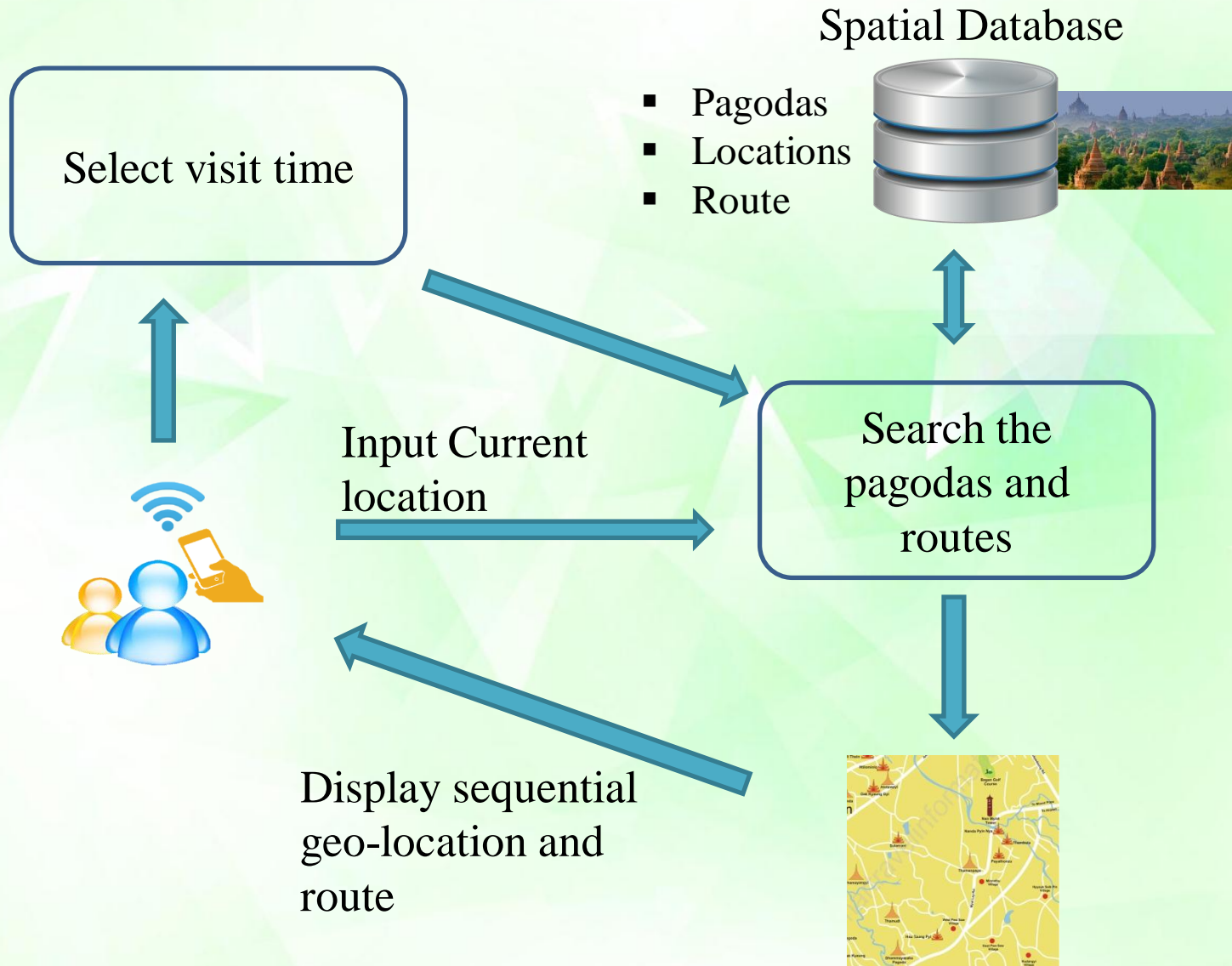


# Travel Route



- It is important to obtain the suitable route without missing and overlapping the route to visit the places in Bagan.
- Obtaining the correct route can save the time in travelling and tourists can visit the more places.
- This system will search the suitable route for visiting more places without wasting the time because of the wrong way.

# General Architecture



# Conclusion

- This application will provides the tourists to obtain the travel information and travel route of the visiting region.
- Tourists can avoid the overlapping route and losing the way in travelling.
- It can obtain the suitable route and can save the time to visit the historical pagodas and temples of Bagan within the limited travel time.
- It will continue to implement the efficient and effective route to travel the attraction and historic places in Myanmar without facing the wrong way during the limited time.

**THANK YOU  
FOR YOUR ATTENTION**